

**BARELAND STRATA PLAN OF LOT 12,
SEC 28, TP 23, ODYD, PLAN EPP76020.**

STRATA PLAN EPS5115

CITY OF KELLOWNA
BCDS 82E.093
SCALE 1:250 METRIC

The intended plot size of this plan is shown in white by BARELAND
in height (D-10) when plotted at a scale of 1:250 METRIC.

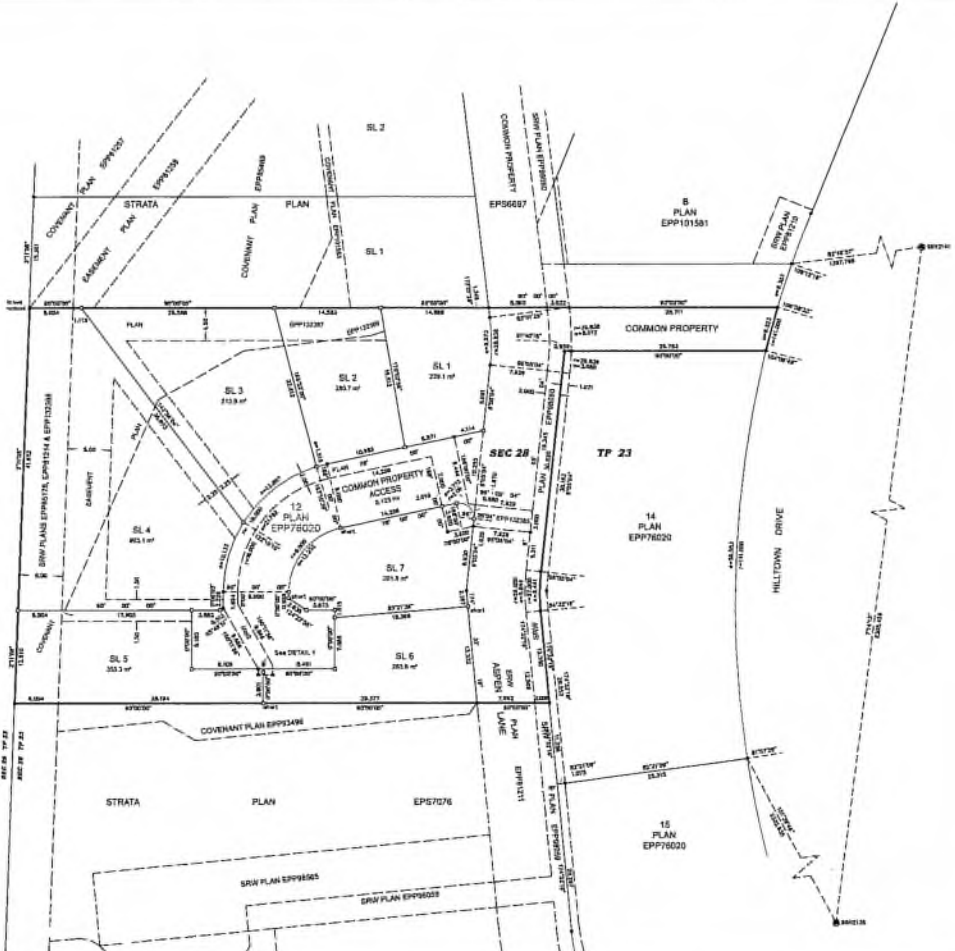
LEGEND

- Division Control Management Fund
 - Division Standard Plan Part 504
 - Division Standard Plan Part 504
 - Division Standard Plan Part 504
 - Division Standard Plan Part 504
- Note: This plan shows one or more white areas which are not set out in this contract.
- Distances shown are horizontal, ground-level distances. In metres and centimetres thereof.
- Integrated Survey Area No. 4, City of Kelowna, B.C. (2005/05/11).
- Old boundaries are shown from 2005 to be possible, unless otherwise noted. To compare grid distances, the City of Kelowna's 2005/05/11 and 2005/05/11 are referred to in the context of the UTM Zone 12.
- The UTM coordinates and estimated station accuracy withheld are derived from the MASCOF published coordinates and ground-level distances for ground control monuments 991218 and 991214.
- This plan shows horizontal ground-level distances unless otherwise specified. To compare grid distances, the City of Kelowna's 2005/05/11 and 2005/05/11 are referred to in the context of the UTM Zone 12.
- Drawn by:
DAI Planning Inc.
Kelowna, B.C.

Plan	Northings	Eastings	Station Accuracy
991218	5237441.80	500110.00	0.30
991214	5236941.80	500110.00	0.30



17
PLAN
KAP88670
SEC 29 TP 23

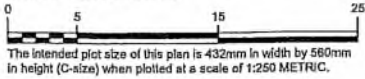


This plan has been reviewed by the Regional Director of Control
Development.
This plan has been reviewed by the Regional Director of Control
Development.
This plan has been reviewed by the Regional Director of Control
Development.
This plan has been reviewed by the Regional Director of Control
Development.

DA Goddard Surveys
1111 St. Paul Street, Kelowna BC
Tel: 250-860-8222

EXPLANATORY PLAN OF PART OF STRATA LOTS 4 & 5,
 SEC 28, TP 23, ODYD, STRATA PLAN EPS5115.
 PURSUANT TO SECTION (99)(1)(e) OF THE LAND TITLE ACT
 FOR RIGHT OF WAY PURPOSES
 BCGS 82E.093
 SCALE 1:250 METRIC

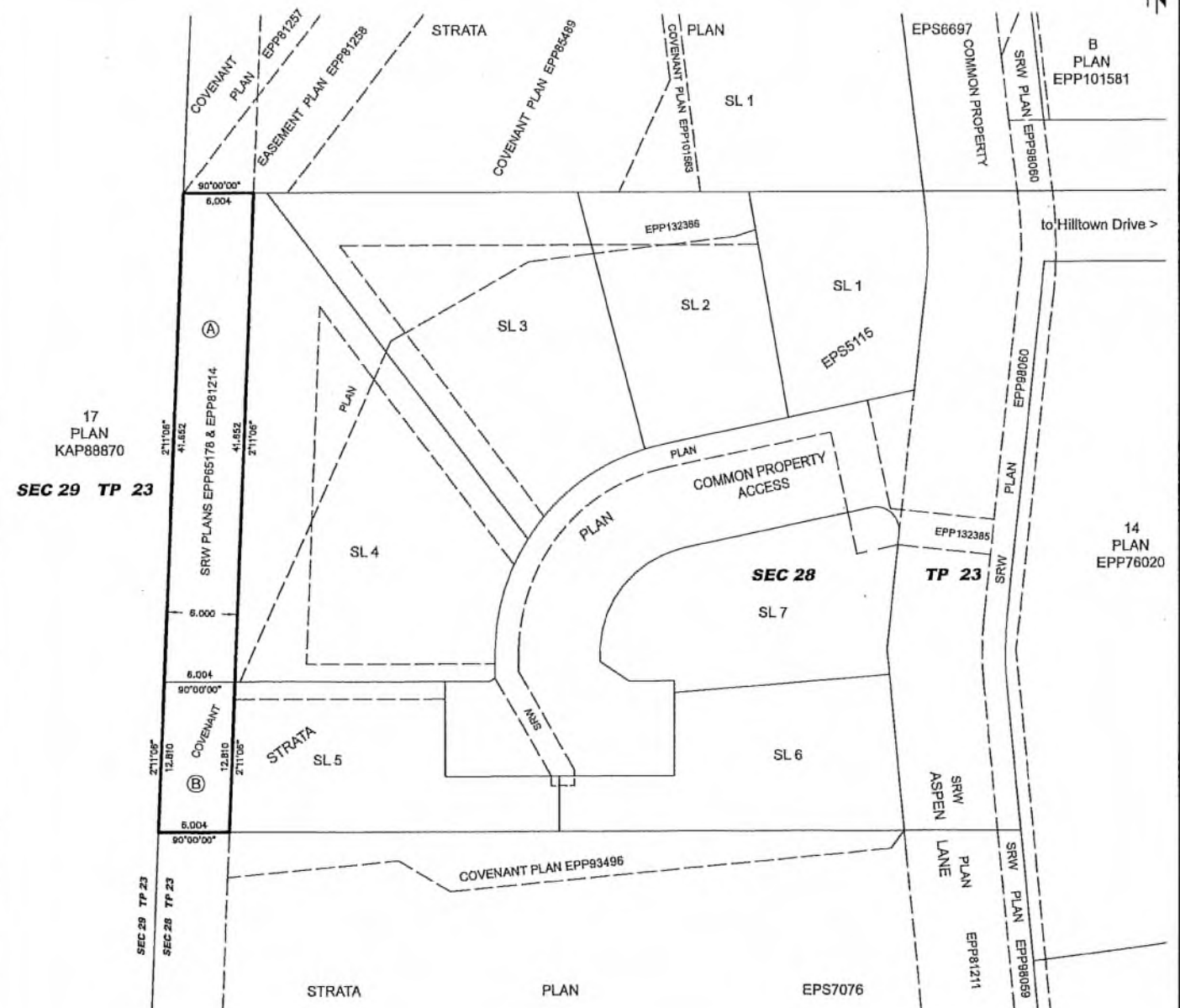
PLAN EPP132388



Distances shown are horizontal, ground-level distances, in metres and decimals thereof.

Bearings shown are grid bearings derived from Strata Plan EPS5115.

Integrated Survey Area No. 4, City of Kelowna, NAD83(CSRS) 4.0.0.BC.1.



17
 PLAN
 KAP88870
SEC 29 TP 23

B
 PLAN
 EPP101581

14
 PLAN
 EPP76020

BOOK OF REFERENCE		
AREA	LEGAL DESCRIPTION	AREA
'A'	STRATA LOT 4, SEC 28, TP 23, ODYD, STRATA PLAN EPS5115	249.9 m ²
'B'	STRATA LOT 5, SEC 28, TP 23, ODYD, STRATA PLAN EPS5115	76.9 m ²

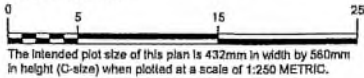
DA Goddard Surveys
 1315 St. Paul Street, Kelowna BC
 File: 419096-BLSP EX2

This plan lies within the Regional District of Central Okanagan.
 This plan is based on the following Land Title and Survey Authority of BC records:
 Plan EPS5115
 Mark A. Cahill, BCLS #812
 October 20, 2023

REFERENCE PLAN OF COVENANT OVER PART OF STRATA
 LOTS 2-5, SEC 28, TP 23, ODYD, STRATA PLAN EPS5115.

PLAN EPP132386

PURSUANT TO SECTION 89(1)(e) OF THE LAND TITLE ACT
 BCGS 82E.093



LEGEND

- ⊙ Denotes Control Monument Found
- Denotes Standard Iron Post Found
- Denotes Standard Iron Post Set

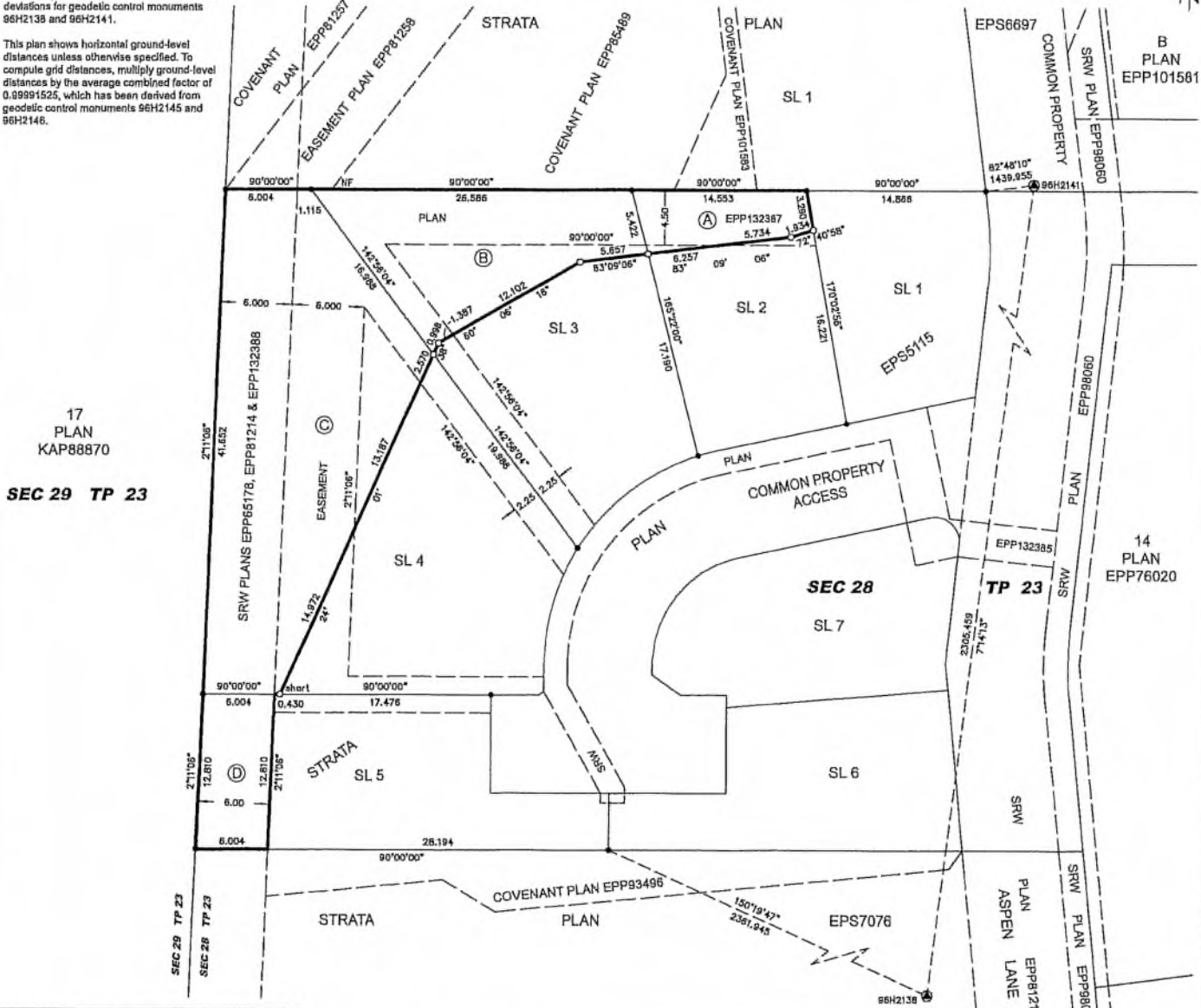
Distances shown are horizontal, ground-level distances, in metres and decimals thereof.

Integrated Survey Area No. 4, City of Kelowna, NAD83(CSRG) 4.0.0.BC.1.

Grid bearings are derived from GNSS ties to geodetic control monuments 96H2138 and 96H2141 and are referred to the central meridian of UTM Zone 11.

The UTM coordinates and estimated absolute accuracy achieved are derived from the MASCO published coordinates and standard deviations for geodetic control monuments 96H2138 and 96H2141.

This plan shows horizontal ground-level distances unless otherwise specified. To compute grid distances, multiply ground-level distances by the average combined factor of 0.99991525, which has been derived from geodetic control monuments 96H2145 and 96H2146.



17
 PLAN
 KAP88870
SEC 29 TP 23

14
 PLAN
 EPP76020

NAD83(CSRG) 4.0.0.BC.1 UTM ZONE 11 COORDINATES			
Point	Northing	Easting	Absolute Accuracy
96H2138	5537562.282	326095.068	0.02
96H2141	5539849.180	326385.474	0.02

BOOK OF REFERENCE		
COV. AREA	LEGAL DESCRIPTION	AREA
'A'	STRATA LOT 2, SEC 28, TP 23, ODYD, STRATA PLAN EPS5115	63.1 m ²
'B'	STRATA LOT 3, SEC 28, TP 23, ODYD, STRATA PLAN EPS5115	211.0 m ²
'C'	STRATA LOT 4, SEC 28, TP 23, ODYD, STRATA PLAN EPS5115	510.5 m ²
'D'	STRATA LOT 5, SEC 28, TP 23, ODYD, STRATA PLAN EPS5115	76.9 m ²

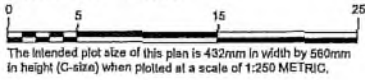
This plan lies within the Regional District of Central Okanagan.

The field survey represented by this plan was completed on the 20th day of October, 2023.

Mark A. Cahill BCLS #812

**EXPLANATORY PLAN OF PART OF STRATA LOTS 4 & 5,
SEC 28, TP 23, ODYD, STRATA PLAN EPS5115.
PURSUANT TO SECTION (99)(1)(e) OF THE LAND TITLE ACT
FOR RIGHT OF WAY PURPOSES
BCGS 82E.093
SCALE 1:250 METRIC**

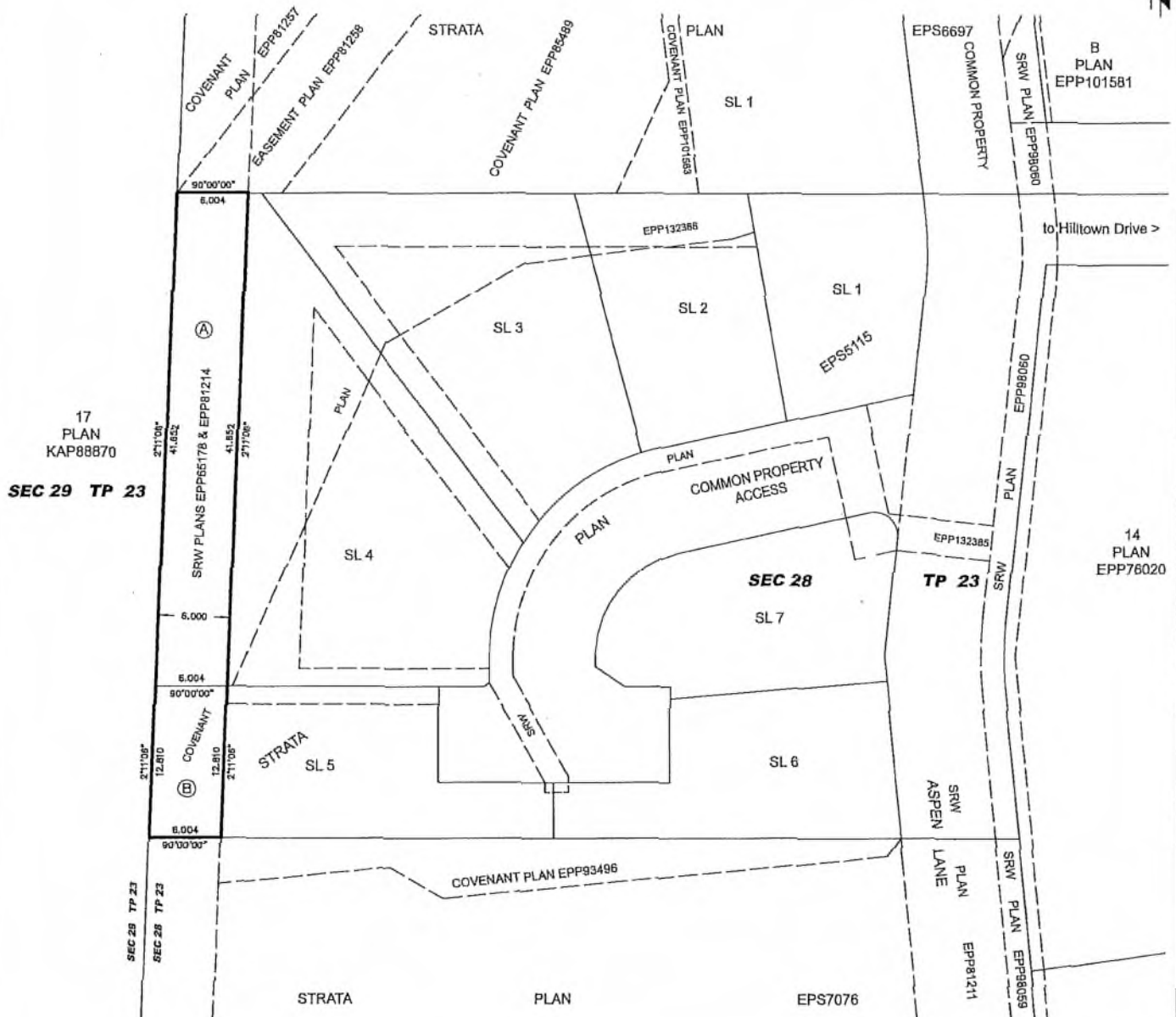
PLAN EPP132388



Distances shown are horizontal, ground-level distances, in metres and decimals thereof.

Bearings shown are grid bearings derived from Strata Plan EPS5115.

Integrated Survey Area No. 4, City of Kelowna, NAD83(CSRB) 4.0.BC.1.



17
PLAN
KAP88870
SEC 29 TP 23

SEC 28 TP 23

DA Goddard Surveys
1315 St. Paul Street, Kelowna BC
File: 419098-BLSP EX2

BOOK OF REFERENCE		
AREA	LEGAL DESCRIPTION	AREA
'A'	STRATA LOT 4, SEC 28, TP 23, ODYD, STRATA PLAN EPS5115	249.9 m ²
'B'	STRATA LOT 5, SEC 28, TP 23, ODYD, STRATA PLAN EPS5115	76.9 m ²

This plan lies within the Regional District of Central Okanagan.
This plan is based on the following Land Title and Survey Authority of BC records:
Plan EPS5115
Mark A. Cahill, BCLS #812
October 20, 2023